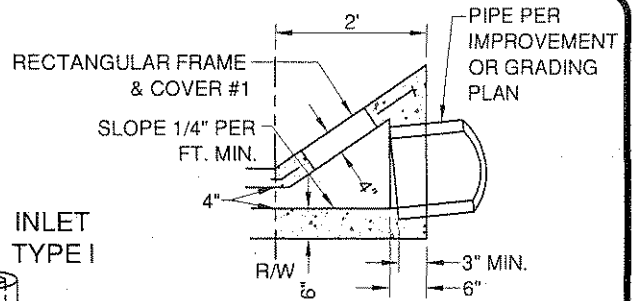
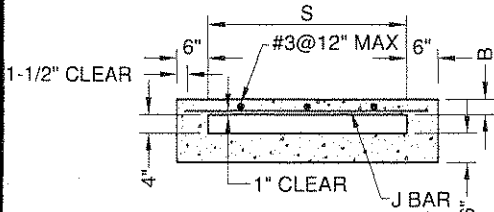


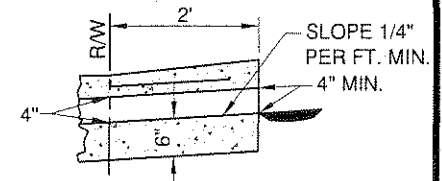
SECTION A-A



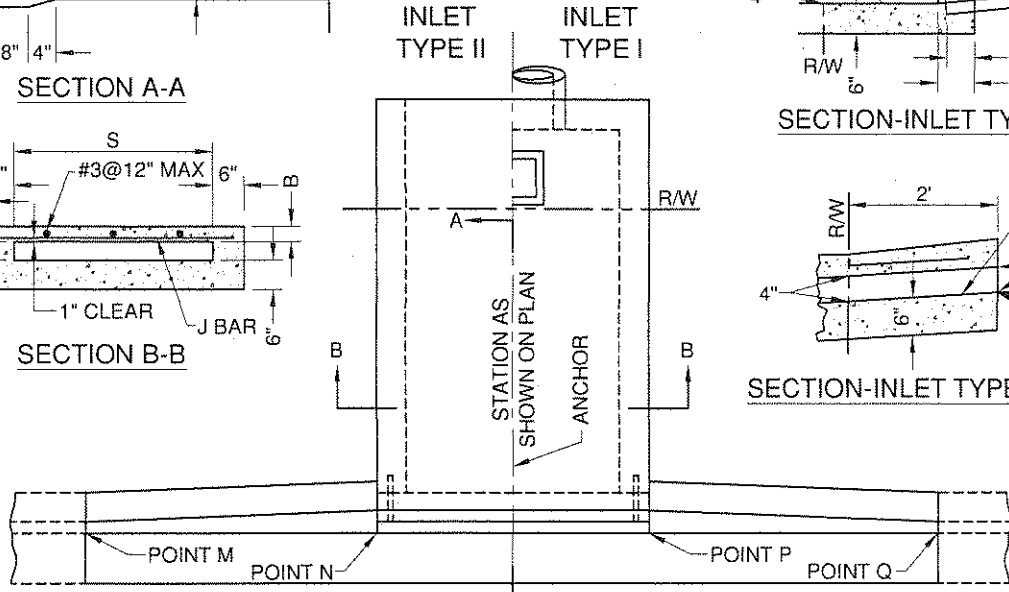
SECTION-INLET TYPE I



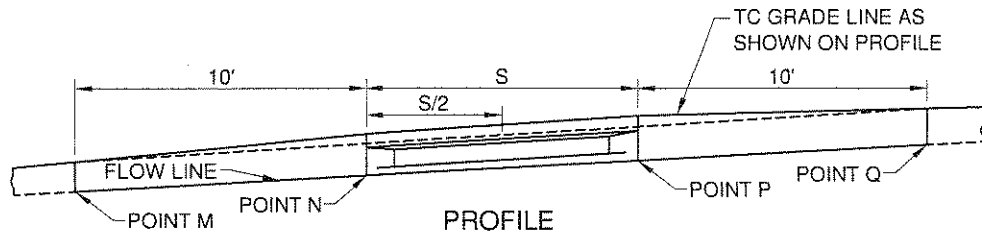
SECTION B-B



SECTION-INLET TYPE II



PLAN



PROFILE

NOTES:

1. FLOOR OF BOX TO BE TROWELED SMOOTH.
2. WHEN THE TOE OF SLOPE IS WITHIN THE R/W, INLET TYPE I BEGINS AT THE TOE RATHER THAN AT THE R/W LINE.
3. FOR OPEN DITCH APPROACH (TYPE II) THE 2' EXTENSION IS NOT REQUIRED WHEN THE BACK OF WALL IS 2' OR MORE FROM THE R/W LINE.
4. TOP OF INLET STRUCTURE (TYPE I & II) TO BE FLUSH WITH ADJACENT SURFACE WHERE PRACTICABLE.
5. A HEADED STEEL STUD $\frac{5}{8}$ " x $6\frac{3}{8}$ " WITH HEAD D = 1" ATTACHED BY A FULL PENETRATION BUTT WELD MAY BE USED AS AN ALTERNATE ANCHOR.
6. NORMAL CURB FACE AT POINT M AND Q, B+5" AT POINT N AND P.
7. ALL STEEL ITEMS, EXCEPT REINFORCING BARS AND RECTANGULAR FRAME AND COVER, SHALL BE PER L.A. CO. R.D. STANDARD #66-01.

STEEL LIST

S	B	GALVANIZED STEEL ANGLE	ANCHOR	J BAR SIZE	J BAR SPACING	J BAR LENGTH
1'-0"	3"	2½" x 2" x ⅜"	2	#3	7"	1'-9"
1'-6"	"	"	"	"	"	2'-3"
2'-0"	"	"	"	"	"	2'-9"
2'-6"	"	"	"	"	"	3'-3"
3'-0"	"	"	"	"	"	3'-9"
3'-6"	"	"	"	"	6"	4'-3"
4'-0"	"	"	"	"	5"	4'-9"
4'-6"	4"	3½" x 3" x ½"	"	"	6½"	5'-3"
5'-0"	"	"	"	"	5"	5'-9"
5'-6"	"	"	"	"	4"	6'-3"
6'-0"	"	"	"	"	3½"	6'-9"

APPROVED:

William Youssef
P.W. DIRECTOR / CITY ENGINEER



City of Westminster

DEPARTMENT OF PUBLIC WORKS

PARKWAY CULVERT

STANDARD NUMBER

212

REVISED DATE: 5/15/08